



NEW FACE

MORE SPACE

PANORAMA MALL

VAN NUYS BLVD. & ROSCOE BLVD.
PANORAMA CITY, CA

NEW FACE.

Fresh new look expected in Summer 2012

TODAY



CENTER COURT

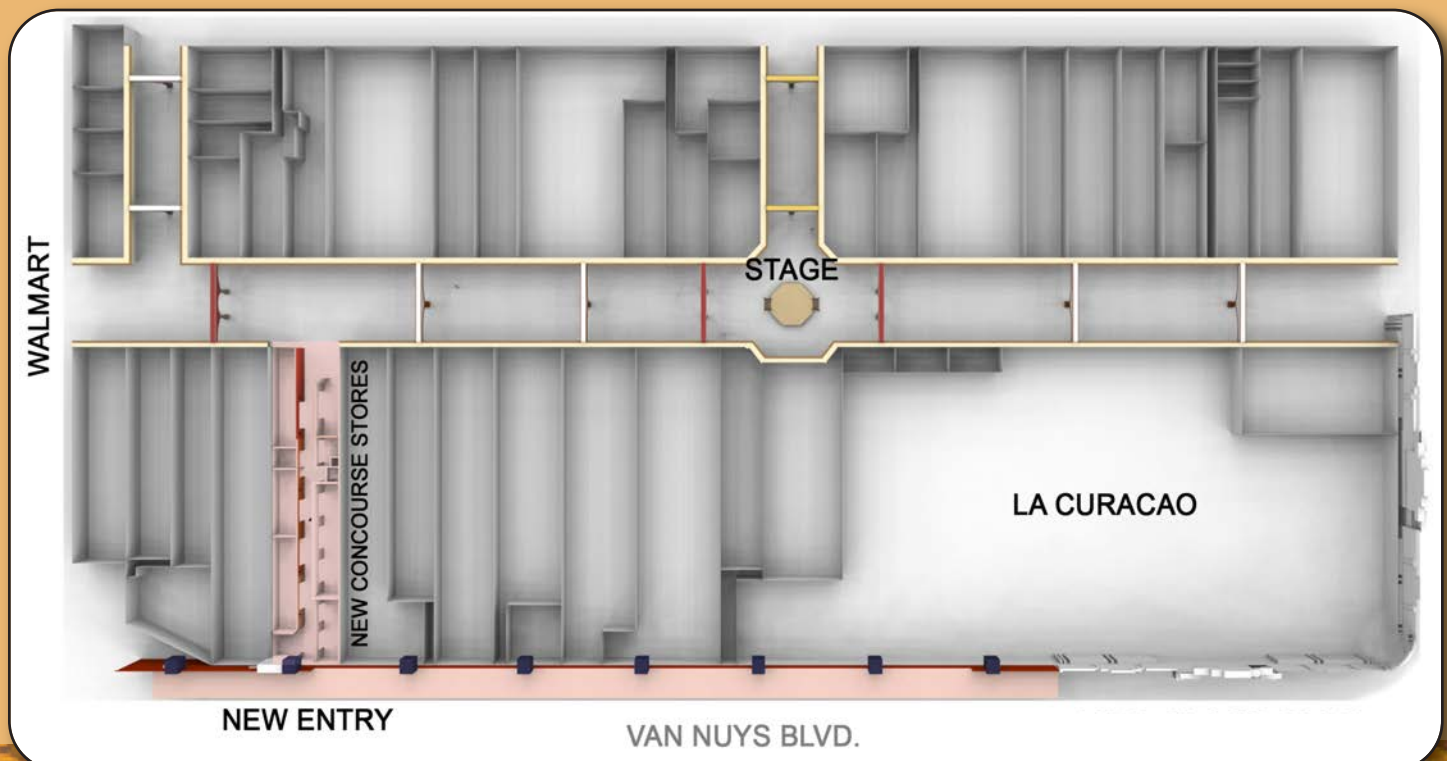
COMING SUMMER 2012



FOOD COURT



MALL FLOOR PLAN



MORE SPACE.

Pre-leasing open-air, quality retail space

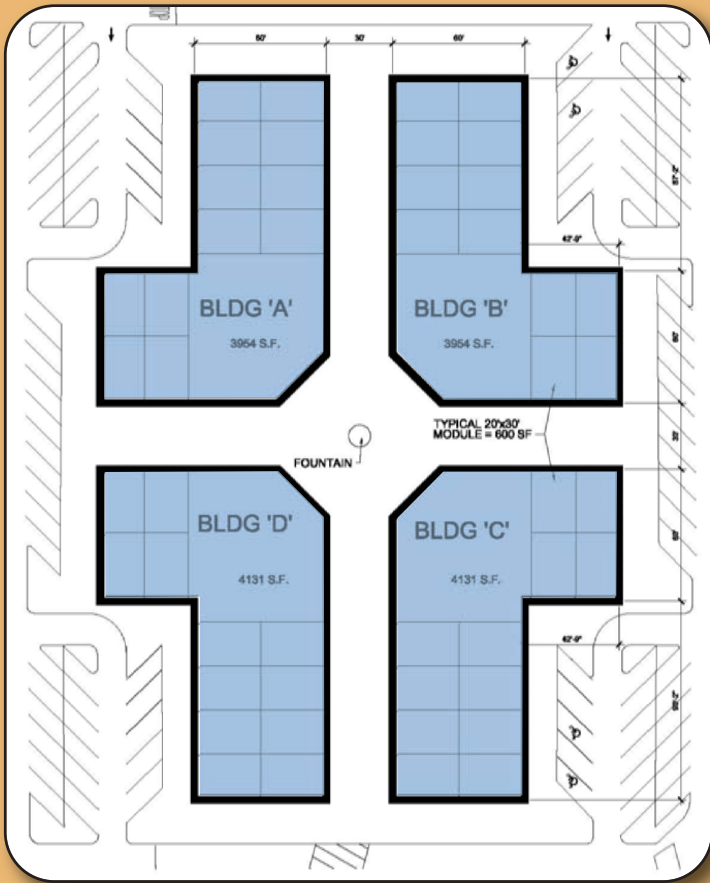
- JOIN -

FOREVER 21 Walmart 
Save money. Live better.

for love²¹ THE CHILDREN'S PLACE 

Payless SHOESOURCE[®] LA CURACAO UN POCO DE SU PAIS 

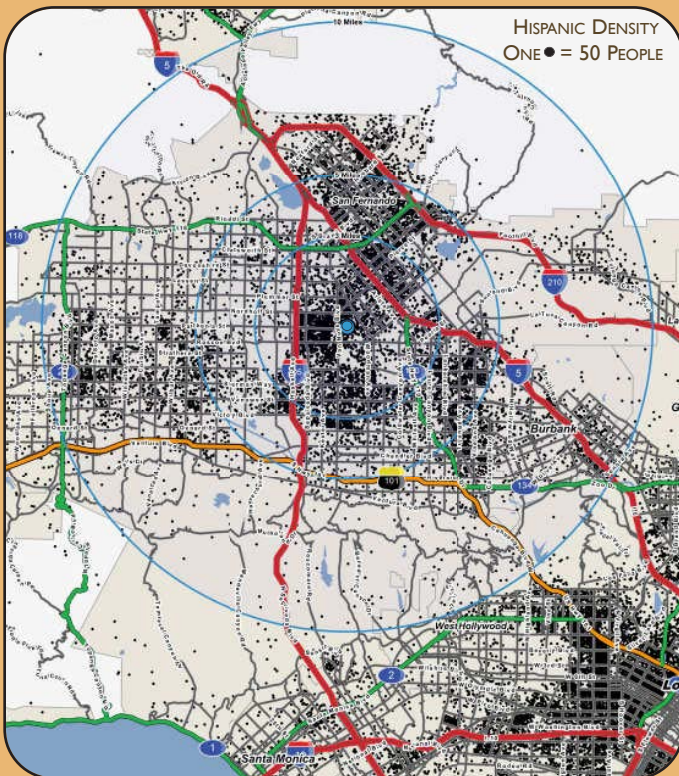
Finish Line[®] Don Roberto JEWELERS[®]



RETAIL + DINING OPPORTUNITIES

<p>\$11.4 BILLION PURCHASING POWER*</p> <p>223,298 HH in 5 mile Trade Area. \$62,238 avg. HH Income <small>*2010 Census</small></p>	<p>ANCHORS</p> <p>Walmart & La Curacao</p>	<p>URBAN DENSITY</p> <p>658,392* <small>*2010 CENSUS</small></p>
<p>STRATEGIC LOCATION</p> <p>851,944 RESIDENTS</p>		
<p>NATIONAL CHAINS</p> <p>Forever 21, Footlocker, For Love 21, Finish Line, Payless Shoes, McDonalds, Gamestop, T-Mobile, Wetzel's Pretzels, Osaka Japan, Subway, Pollo Campero</p>	<p>206,821</p> <p>Daytime Population</p>	<p>MORE SPACE</p> <p>40,000 SF New Retail & Dining (Pre-Leasing)</p>

Within a 5 mile trade area of approximately 223,298 households and 751,051 residents, Panorama Mall is the location for retailers and restaurants.



CONTACT INFORMATION

ENRIQUE LEGASPI 213.280.0269	ALEX GONZALEZ 602.953.6379
DANIEL LEGASPI 323.728.8455	ERIC SOTO 323.728.8455